


Department of Engineering
Dan Gaillet, P.E., County Engineer

3137 South Liberty Street, Canton, MS 39046
Office (601) 790-2525 FAX (601) 859-3430

MEMORANDUM

April 10, 2019

To: Sheila Jones, Supervisor, District I
Trey Baxter, Supervisor, District II
Gerald Steen, Supervisor, District III
David Bishop, Supervisor, District IV
Paul Griffin, Supervisor, District V

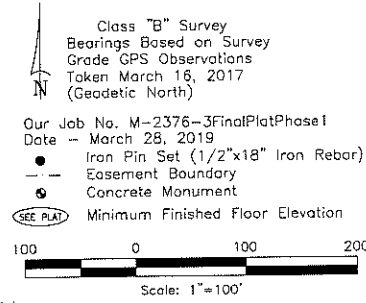
From: Dan Gaillet, P.E. 
County Engineer

Re: Thornberry, Phase I
Final Plat

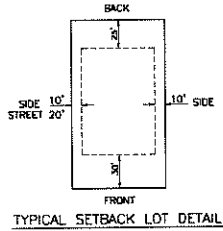
The Engineering Department recommends approval of Thornberry Development, LLC Final Plat of Thornberry, Phase I. The Development is approximately 46.31 acres with 93 lots ranging from approximately .3 to .7 acres. Two (2) Letters of Credit have been received for this development; one for the final lift and a separate LOC for the round-a-bout on Dewees.

THORNBERRY, PHASE 1

SITUATED IN THE SE 1/4 OF SECTION 14 &
THE NE 1/4 OF SECTION 23, T8N-R1E,
MADISON COUNTY, MISSISSIPPI



Note:
Random Traverse Closure Precision For This Survey Meets
or Exceeds the Minimum Standards For a Class "B" Survey.



FIRE HYDRANT
ELEVATION TABLE

FH NO.	TOP NUT ELEV.
FH 1	341.95'
FH 2	329.96'
FH 3	322.34'
FH 4	318.63'
FH 5	328.35'
FH 6	334.08'
FH 7	329.21'
FH 8	338.42'
FH 9	344.53'
FH 10	339.34'

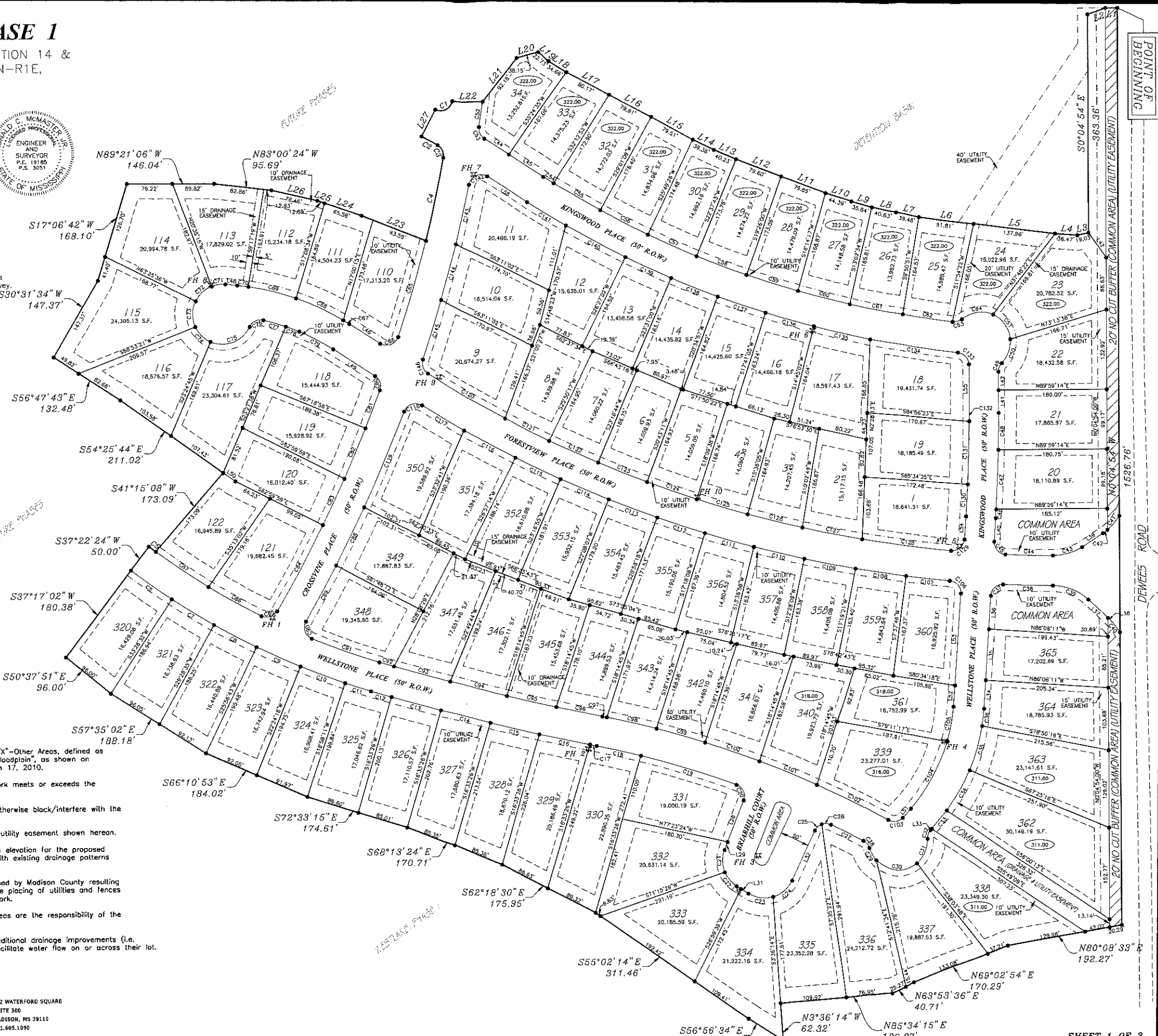
NOTES:

- This is to certify that this property is located in Zone "X"-Other Areas, defined as "Areas determined to be outside the 0.2% annual chance floodplain", as shown on FIRM Map Number No. 28089C0395F, revised date of March 17, 2010.
- Iron pins at lot corners as shown on this plot. Field work meets or exceeds the requirements for a Class "B" survey.
- No fences or other obstructions may be placed in or otherwise block/interfere with the drainage easements shown.
- No building may be constructed within any drainage or utility easement shown hereon.
- The finish floor elevations shown represent the minimum elevation for the proposed structures, and should be adjusted higher to correspond with existing drainage patterns and surrounding grades.
- Damage caused to any infrastructure owned or maintained by Madison County resulting from work done by others including, but not limited to, the placing of utilities and fences shall be the financial responsibility of the owner of said work.
- Maintenance of all drainage easements and common areas are the responsibility of the the Homeowner's Association.
- The individual lot owners/builders are responsible for additional drainage improvements (i.e. catch basins, storm pipe, trench drains etc.) needed to facilitate water flow on or across their lot.



M-MASTER & ASSOCIATES, INC.
CIVIL ENGINEERS & LAND SURVEYORS

212 WATERFORD SQUARE
SUITE 300
MADISON, MS 39110
601.695.1090



THORNBERRY, PHASE I
SITUATED IN THE SE 1/4 OF SECTION 14 &
THE NE 1/4 OF SECTION 23, T8N-R1E,
MADISON COUNTY, MISSISSIPPI

ACKNOWLEDGMENT
STATE OF MISSISSIPPI
COUNTY OF MADISON

Personally appeared before me, the undersigned officer in and for the jurisdiction thereof, the within named W. Scott Giddon, who acknowledged to me that he signed the foregoing instrument as the duly authorized representative of Thornberry Development, Inc., a Mississippi corporation, who acknowledged to me that he signed the within named this plat and the certificates thereon, for and on behalf of, said Thornberry Development, LLC, owner, as its act and deed, after being authorized so to do, and Ronald C. McMaster, Jr., Professional Engineer and Surveyor, who acknowledged to me that he signed and delivered this plat and the certificates thereon as his own act and deed, on the day and year herein mentioned.

Given under my hand and seal of office this the _____ day of _____, 2019.

By: _____ D.C.

Ronny Lott, Chancery Clerk
FILING AND RECORDATION
STATE OF MISSISSIPPI
COUNTY OF MADISON

I, Ronny Lott, Chancery Clerk in and for said County and State, do hereby certify that the final plat of Thornberry, Phase I, was filed for record in my office on this the _____ day of _____, 2019, and was duly recorded in Plat Cabinet _____ of Slide _____ of the records of maps and plats of land in Madison County, Mississippi.

Given under my hand and seal of office this the _____ day of _____, 2019.

By: _____ D.C.

Ronny Lott, Chancery Clerk

CERTIFICATE AND EDUCATION OF OWNER
STATE OF MISSISSIPPI
COUNTY OF MADISON

I, W. Scott Giddon, Manager of Thornberry Development, LLC, a Mississippi Limited Liability Company, do hereby certify that the aforementioned is the owner of the land described in the foregoing plat of W. Scott Giddon, Professional Engineer and Surveyor, published as shown herein, and hereby adopt this plat of owner, over and above the original plat and certificate published as shown herein, and have designated the same as the plat of record as the act and deed of said limited liability company as owner and have designated the same as Thornberry, Phase I.

All utilities, utility easements, and other easements are as designated and defined herein. All utilities, utility easements, streets, and street rights-of-way shall be dedicated for public use. Witness my signature this the _____ day of _____, 2019.

By: _____
Thornberry Development, LLC
A Mississippi Limited Liability Company
W. Scott Giddon, Manager

COUNTY ENGINEER'S RECOMMENDATION
STATE OF MISSISSIPPI
COUNTY OF MADISON

I have examined this plat and find it conforms to all conditions set forth on the preliminary plat as approved by the Board of Supervisors of Madison County, Mississippi and thus recommend final approval.

By: _____
Dan Galleg, P.E.
Madison County Engineer

APPROVAL OF THE BOARD OF SUPERVISORS
STATE OF MISSISSIPPI
COUNTY OF MADISON

I hereby certify that this is a true copy and that this plat was approved by the Board of Supervisors of Madison County in session on the _____ day of _____, 2019.

Madison County Board of Supervisors

By: _____
Trey Baxter, President
Ronny Lott, Chancery Clerk

SUPERVISOR'S CERTIFICATE OF COMPLIANCE
STATE OF MISSISSIPPI
COUNTY OF MADISON

I, Ronald C. McMaster, Jr., Professional Engineer and Surveyor, do hereby certify that the monuments and references shown on this section and correct representation of a survey to the accuracy designated in the subdivision regulations for Madison County, Mississippi.

Witness my signature this the _____ day of _____, 2019.

By: _____
Ronald C. McMaster, Jr., Professional Engineer and Surveyor

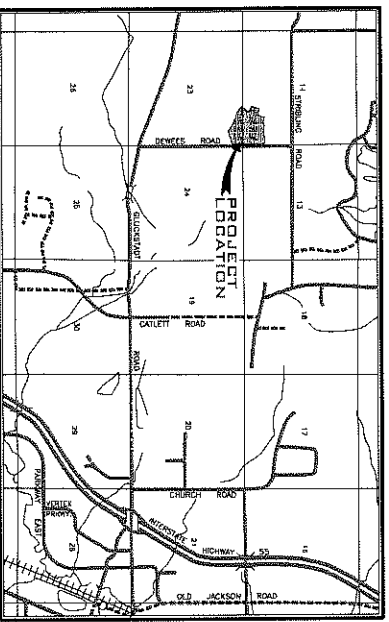
CERTIFICATE OF COMPARISON
STATE OF MISSISSIPPI
COUNTY OF MADISON

We, Ronny Lott, Chancery Clerk, and Ronald C. McMaster, Jr., Professional Engineer and Surveyor, do hereby certify that we have carefully compared this plat of Thornberry, Phase I, with the original thereof, as made by Ronald C. McMaster, Jr., Professional Engineer and Surveyor, and find it to be a true and correct copy of said map or plat.

Given under my hand and seal of office this the _____ day of _____, 2019.

By: _____
Ronald C. McMaster, Jr., P.E., P.S.
Ronny Lott, Chancery Clerk

By: _____ D.C.



VICINITY MAP

PROFESSIONAL LAND SURVEYOR'S CERTIFICATE
STATE OF MISSISSIPPI
COUNTY OF MADISON

I, Ronald C. McMaster, Jr., Professional Engineer and Surveyor, do hereby certify that at the request of Thornberry Development, LLC, the owner, have subdivided and plotted the following described land, as follows, to-wit:

A parcel or tract of land, containing 48,311.5 acres (2,017,328.95 Sq. Ft.), more or less, lying and being situated in Section the Southeast 1/4 of Section 14 and the Northeast 1/4 of Section 23, T8N-R1E, Madison County, Mississippi, being a part of that property described in Deed Book 3192 at Page 783 of the Records of the Office of the Chancery Clerk of said Madison County, at Canton, Mississippi, and being more particularly described as follows:

COMPARISON of an iron pin lying at the SW corner of said Section 14, T8N-R1E, Madison County, Mississippi, said point also lying on the Eastern boundary of Johnstone Phase Two, as shown on map or plat of same, in Plat Cabinet 2991 Sub 116 of the Records of said Madison County, Mississippi, run thence

North 00 degrees 33 minutes 33 seconds West (North 00 degrees 40 minutes 10 seconds West-Gird Bearing, State Plane, Mississippi West Zone) along the Western boundary of said Section 14, T8N-R1E and the Eastern boundary of said Johnstone Phase Two, for a distance of 941.53 feet; thence the said Johnstone Phase Two, said point also being Plat Cabinet 2991 Sub 116 of the Records of said Madison County, Mississippi, thence

Continue North 00 degrees 33 minutes 33 seconds West (North 00 degrees 40 minutes 10 seconds West-Gird Bearing, State Plane, Mississippi West Zone) along the Western boundary of said Section 14, T8N-R1E and the Eastern boundary of said Devin Springs Two, for a distance of 1,603.53 feet to the centerline of an existing thirty (30) foot Shell Pipeline Corporation easement, as described in Deed Book 124 at Page 440 of the Records of said Madison County, Mississippi, thence

Leaving the centerline of said existing thirty (30) foot Shell Pipeline Corporation easement, continue North 00 degrees 33 minutes 33 seconds West (North 00 degrees 40 minutes 10 seconds West-Gird Bearing, State Plane, Mississippi West Zone) along the Western boundary of said Section 14, T8N-R1E, and the Eastern boundary of said Devin Springs Two for a distance of 48.01 feet, thence

Leaving the Western boundary of said Section 14, T8N-R1E, and the Eastern boundary of said Devin Springs Two, run to points at each of the following calls:

South 89 degrees 36 minutes 23 seconds East for a distance of 787.53 feet; thence South 89 degrees 36 minutes 23 seconds East for a distance of 234.29 feet; thence South 89 degrees 36 minutes 23 seconds East for a distance of 677.27 feet; thence North 17 degrees 19 minutes 02 seconds East for a distance of 20.76 feet; thence North 08 degrees 59 minutes 43 seconds East for a distance of 1,633.89 feet; thence North 00 degrees 44 minutes 15 seconds West for a distance of 1,531.10 feet; thence North 10 degrees 08 minutes 13 seconds West for a distance of 1,531.10 feet; thence North 18 degrees 08 minutes 13 seconds West for a distance of 1,531.10 feet; thence North 17 degrees 19 minutes 02 seconds West for a distance of 1,884.28 feet; thence North 17 degrees 19 minutes 02 seconds West for a distance of 1,884.28 feet; thence North 08 degrees 30 minutes 43 seconds West for a distance of 3,008.82 feet; thence

South 89 degrees 37 minutes 00 seconds East along the Southern Right-of-Way of said Stripling Road, for a distance of 536.68 feet; thence

Leaving the Southern Right-of-Way of said Stripling Road, run to points at each of the following calls:

South 13 degrees 01 minutes 35 seconds East for a distance of 1,833.97 feet; thence South 18 degrees 40 minutes 10 seconds East for a distance of 215.67 feet; thence South 18 degrees 40 minutes 10 seconds East for a distance of 1,924.15 feet; thence South 08 degrees 40 minutes 35 seconds East for a distance of 1,924.15 feet; thence South 10 degrees 40 minutes 35 seconds East for a distance of 1,924.15 feet; thence South 10 degrees 40 minutes 35 seconds East for a distance of 1,924.15 feet; thence South 84 degrees 09 minutes 18 seconds East for a distance of 207.60 feet; thence South 73 degrees 40 minutes 38 seconds East for a distance of 209.39 feet; thence South 68 degrees 46 minutes 11 seconds East for a distance of 382.39 feet; thence North 17 degrees 06 minutes 42 seconds East for a distance of 567.16 feet; thence North 48 degrees 11 minutes 27 seconds East for a distance of 1,936.09 feet; thence

North for a distance of 994.49 feet to the above referenced Southern Right-of-Way of said Stripling Road; thence

South 89 degrees 37 minutes 00 seconds East along the Southern Right-of-Way of said Stripling Road, for a distance of 1,248.45 feet, to the intersection of the Southern Right-of-Way of said Stripling Road and the Western boundary of Dewees Road, as it exists in July, 2019, thence

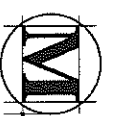
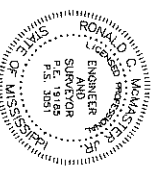
South 00 degrees 04 minutes 54 seconds East along the Western boundary of said Dewees Road for a distance of 1,118.77 feet to the POINT OF BEGINNING of the herein described property; thence

Leaving the Western boundary of said Dewees Road, run to iron pins at each of the following calls:

West for a distance of 20.00 feet; thence
South 00 degrees 04 minutes 54 seconds East for a distance of 31.47 feet; thence
South 00 degrees 04 minutes 54 seconds East for a distance of 363.36 feet; thence
South 78 degrees 03 minutes 32 seconds West for a distance of 19.03 feet; thence
North 84 degrees 58 minutes 13 seconds West for a distance of 36.47 feet; thence
North 82 degrees 50 minutes 50 seconds West for a distance of 137.96 feet; thence
North 82 degrees 28 minutes 47 seconds West for a distance of 91.81 feet; thence
North 78 degrees 50 minutes 08 seconds West for a distance of 48.66 feet; thence
North 72 degrees 48 minutes 38 seconds West for a distance of 48.66 feet; thence
North 72 degrees 48 minutes 38 seconds West for a distance of 35.84 feet; thence
North 71 degrees 50 minutes 53 seconds West for a distance of 44.39 feet; thence
North 68 degrees 09 minutes 32 seconds West for a distance of 79.85 feet; thence
North 66 degrees 27 minutes 19 seconds West for a distance of 79.85 feet; thence
North 63 degrees 38 minutes 27 seconds West for a distance of 40.23 feet; thence
North 61 degrees 11 minutes 11 seconds West for a distance of 39.28 feet; thence
North 61 degrees 11 minutes 11 seconds West for a distance of 39.28 feet; thence
North 57 degrees 25 minutes 27 seconds West for a distance of 80.17 feet; thence
North 57 degrees 25 minutes 27 seconds West for a distance of 34.66 feet; thence
South 48 degrees 07 minutes 24 seconds West for a distance of 22.73 feet; thence
South 75 degrees 23 minutes 18 seconds West for a distance of 38.15 feet; thence
South 38 degrees 36 minutes 18 seconds West for a distance of 92.78 feet; thence
South 87 degrees 58 minutes 18 seconds East for a distance of 50.74 feet; thence
South 27 degrees 54 minutes 04 seconds West; thence
South 27 degrees 35 minutes 03 seconds West; for a distance of 50.00 feet; thence
30.57 feet along the arc of an 800.00 foot radius curve to the right, said arc having a 30.57 foot chord which bears South 61 degrees 18 minutes 15 seconds East; thence
24.71 feet along the arc of a 20.00 foot radius curve to the right, said arc having a 141.03 foot chord which bears South 24 degrees 49 minutes 08 seconds East; thence the right, said arc having a 141.03 foot chord which bears South 24 degrees 49 minutes 08 seconds East; thence
North 68 degrees 03 minutes 14 seconds West for a distance of 114.23 feet; thence
North 70 degrees 55 minutes 06 seconds West for a distance of 65.58 feet; thence
North 70 degrees 55 minutes 06 seconds West for a distance of 12.89 feet; thence
North 79 degrees 38 minutes 52 seconds West for a distance of 12.89 feet; thence
North 83 degrees 00 minutes 24 seconds West for a distance of 17.45 feet; thence
North 83 degrees 00 minutes 24 seconds West for a distance of 17.45 feet; thence
North 17 degrees 06 minutes 42 seconds West for a distance of 168.10 feet; thence
South 50 degrees 31 minutes 34 seconds East for a distance of 132.48 feet; thence
South 54 degrees 25 minutes 44 seconds East for a distance of 1,113.02 feet; thence
South 41 degrees 15 minutes 08 seconds West for a distance of 173.00 feet; thence
South 41 degrees 15 minutes 08 seconds West for a distance of 173.00 feet; thence
14.89 feet along the arc of a 8205.00 foot radius curve to the right, said arc having a 14.89 foot chord which bears North 22 degrees 28 minutes 28 seconds West; thence
South 37 degrees 17 minutes 02 seconds West for a distance of 180.39 feet; thence
South 50 degrees 31 minutes 34 seconds East for a distance of 96.00 feet; thence
South 57 degrees 35 minutes 02 seconds East for a distance of 188.18 feet; thence
South 66 degrees 10 minutes 53 seconds East for a distance of 184.02 feet; thence
South 72 degrees 33 minutes 15 seconds East for a distance of 174.51 feet; thence
South 68 degrees 13 minutes 34 seconds East for a distance of 175.56 feet; thence
South 55 degrees 02 minutes 34 seconds East for a distance of 311.46 feet; thence
South 55 degrees 02 minutes 34 seconds East for a distance of 67.42 feet; thence
North 03 degrees 36 minutes 15 seconds West for a distance of 63.32 feet; thence
North 85 degrees 34 minutes 15 seconds East for a distance of 1,963.87 feet; thence
North 63 degrees 03 minutes 36 seconds East for a distance of 40.71 feet; thence
North 88 degrees 02 minutes 34 seconds East for a distance of 132.27 feet to the above referenced Western boundary of said Dewees Road; thence
North 00 degrees 04 minutes 54 seconds West along the Western boundary of said Dewees Road for a distance of 1526.76 feet to the POINT OF BEGINNING of the above described parcel or tract of land.

Witness my signature, this the _____ day of _____, 2019.

By: _____
Ronald C. McMaster, Jr., Professional Engineer and Surveyor
Mississippi P.S. No. 3051



McMASTER & ASSOCIATES, INC.
CIVIL ENGINEERS & LAND SURVEYORS

1312 WATERROAD SQUARE
SUITE 300
MADISON, MS 39110
601.693.1890

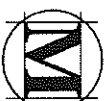
THORNBERY, PHASE 1

SITUATED IN THE SE 1/4 OF SECTION 14 &
THE NE 1/4 OF SECTION 23, T8N-R1E,
MADISON COUNTY, MISSISSIPPI

Line #	Length	Direction
L1	20.00	N90°00'00"E
L2	31.47	S70°29'06"W
L3	19.03	S78°03'32"W
L4	36.47	N84°58'13"W
L5	137.96	N82°50'50"W
L6	91.81	N82°28'47"W
L7	39.46	N78°50'08"W
L8	40.63	N78°29'18"W
L9	35.64	N74°48'36"W
L10	44.39	N71°50'53"W
L11	79.85	N69°09'32"W
L12	79.60	N68°27'19"W
L13	40.23	N66°38'27"W
L14	39.36	N63°51'11"W
L15	79.51	N61°11'30"W
L16	79.61	N61°53'45"W
L17	80.17	N61°28'27"W
L18	34.66	N57°27'07"W
L19	22.73	N48°07'24"W
L20	38.15	S75°23'22"E
L21	92.18	N38°36'18"E
L22	50.27	S87°50'18"E
L23	114.23	N88°03'14"W
L24	65.58	S70°55'06"E
L25	12.89	N70°55'08"W
L26	78.46	N76°38'52"W
L27	50.00	N27°36'03"E
L28	74.24	S21°18'01"W
L29	14.49	S21°18'01"W
L30	8.69	S57°18'02"E
L31	14.26	S57°18'02"E
L32	92.21	N25°10'40"E
L33	2.99	N43°05'15"E
L34	47.55	N35°31'48"E
L35	85.00	N35°31'48"E
L36	50.91	N35°31'48"E
L37	44.83	S46°37'27"E
L38	6.13	S46°37'27"E
L39	41.64	S56°58'29"W
L40	39.46	S75°53'48"W
L41	37.66	S0°04'54"E
L42	31.02	S0°04'54"E
L43	31.02	S0°04'54"E
L44	50.85	S35°42'11"E
L45	49.08	S57°03'24"E
L46	69.17	S37°03'24"E
L48	19.76	S84°02'29"E
L49	83.16	N57°07'40"W
L50	24.39	S54°25'44"E
L51	20.42	N43°05'15"E
L52	35.30	N35°31'48"E
L53	153.72	N35°31'48"E
L54	38.67	N35°31'48"E
L55	81.53	N0°04'54"W
L56	80.63	S57°03'24"E

Curve #	Length	Radius	Chord Direction	Chord Length
C1	36.19	20.00	S62°54'04"W	32.65
C2	30.57	800.00	S61°18'15"E	30.57
C3	24.71	20.00	S24°49'08"E	23.17
C4	141.05	2325.00	S12°18'34"W	141.03
C5	14.89	1205.00	N52°58'33"W	14.89
C6	83.58	1255.00	S54°32'04"E	83.56
C7	82.96	1255.00	S68°20'09"E	82.94
C8	80.01	1255.00	S62°03'21"E	80.00
C9	80.01	1255.00	S65°42'32"E	80.00
C10	80.01	1255.00	S69°21'43"E	80.00
C11	45.54	1255.00	S72°13'40"E	45.54
C12	35.65	4230.00	S73°30'32"E	35.65
C13	85.01	4230.00	S74°19'33"E	85.01
C14	85.06	4230.00	S75°28'40"E	85.05
C15	85.13	4230.00	S78°37'49"E	85.13
C16	85.25	4230.00	S77°47'03"E	85.24
C17	11.72	4230.00	S78°26'27"E	11.72
C18	76.13	1590.00	N77°08'56"W	76.12
C19	167.46	1590.00	N72°45'36"W	167.38
C20	31.78	20.00	N24°13'16"W	28.54
C21	38.19	50.00	S0°34'59"E	37.27
C22	30.40	50.00	S39°53'00"E	29.93
C23	42.52	50.00	S81°39'50"E	41.25
C24	42.58	50.00	N49°34'31"E	41.31
C25	15.92	20.00	S47°59'15"W	15.51
C26	15.92	20.00	N86°23'37"W	15.51
C27	60.89	1590.00	N62°29'13"W	60.89
C28	16.02	20.00	N38°26'35"W	15.99
C29	23.66	50.00	S29°03'16"E	23.44
C30	74.57	50.00	S45°20'18"E	73.85
C31	46.98	50.00	N25°00'48"E	45.28
C32	15.71	20.00	S20°35'20"W	15.31
C33	39.22	325.00	N39°37'47"E	39.20
C34	77.11	325.00	N29°22'32"E	76.92
C35	77.11	325.00	N15°46'58"E	76.92
C36	28.86	325.00	N6°28'29"E	28.88
C37	31.10	20.00	S48°26'55"W	28.06
C38	83.16	2030.00	S88°10'25"E	83.16
C39	64.50	86.50	N67°59'08"W	63.02
C40	25.25	86.50	N38°15'44"W	25.16
C41	30.85	86.50	N40°35'04"E	30.69
C42	9.32	86.50	N53°53'20"E	9.31
C43	50.86	86.50	N73°49'08"E	50.13
C44	79.34	1980.00	S88°11'21"E	79.34
C45	31.74	20.00	S41°34'20"E	28.51
C46	14.55	2525.00	N3°43'55"E	14.55
C47	99.28	2525.00	N2°26'26"E	99.27
C48	61.51	2525.00	N0°36'58"E	61.51
C49	15.71	20.00	S22°25'01"W	15.31
C50	43.98	50.00	N19°56'46"E	42.21
C51	53.00	50.00	N35°23'16"W	50.55
C52	42.16	2375.00	N8°34'58"E	42.16
C53	23.08	20.00	S23°58'58"E	21.83
C54	20.15	1800.00	S57°25'03"E	20.15
C55	89.28	1800.00	S58°22'37"E	89.27
C56	89.28	1800.00	S62°34'27"E	89.27
C57	89.28	1800.00	S65°46'16"E	89.27
C58	89.28	1800.00	S68°58'06"E	89.27
C59	89.28	1800.00	S72°08'58"E	89.27
C60	89.28	1800.00	S75°21'46"E	89.27
C61	89.28	1800.00	S78°33'36"E	89.27
C62	85.81	1800.00	S81°41'41"E	85.80
C63	16.02	20.00	N73°49'30"E	15.59
C64	55.30	50.00	S82°33'52"W	52.52
C65	166.49	2325.00	N18°05'56"E	166.45
C66	36.55	20.00	N70°30'40"E	31.67
C67	11.72	425.00	N57°55'04"W	11.72
C68	87.58	425.00	N64°36'42"W	87.43
C69	81.65	425.00	N78°01'09"W	81.53
C70	18.68	425.00	S82°46'56"E	18.68
C71	23.49	50.00	N82°29'54"E	23.28
C72	37.19	50.00	N47°43'41"E	36.34
C73	44.26	50.00	N1°03'38"E	42.83
C74	36.56	50.00	N45°14'47"W	35.75
C75	77.35	50.00	N68°29'21"E	69.86

Curve #	Length	Radius	Chord Direction	Chord Length
C76	27.33	20.00	S64°19'00"W	25.25
C77	38.70	375.00	N73°35'02"W	38.68
C78	23.87	375.00	N68°48'13"W	23.87
C79	64.48	375.00	N82°03'14"W	64.40
C80	27.08	20.00	N18°20'17"W	25.06
C81	67.60	2325.00	N21°17'05"E	67.59
C82	91.00	2325.00	N23°14'20"E	91.00
C83	85.04	2325.00	N25°24'29"E	85.03
C84	162.55	2325.00	N28°27'32"E	162.52
C85	30.15	20.00	N73°38'54"E	27.38
C86	100.73	1205.00	S60°46'13"E	100.70
C87	106.22	1205.00	S55°51'01"E	106.18
C88	107.48	2375.00	N28°22'59"E	107.45
C89	106.25	2375.00	N28°57'39"E	106.24
C90	34.13	20.00	S18°38'54"E	30.14
C91	120.47	1205.00	S70°24'12"E	120.42
C92	25.07	4180.00	S73°26'21"E	25.07
C93	98.96	4180.00	S74°16'32"E	98.96
C94	97.81	4180.00	S75°36'37"E	97.81
C95	85.34	4180.00	S78°51'56"E	85.34
C96	78.05	4180.00	S77°59'07"E	78.05
C97	7.46	1640.00	N78°23'24"W	7.46
C98	85.34	1640.00	N76°46'08"W	85.33
C99	85.06	1640.00	N73°47'33"W	85.05
C100	95.40	1640.00	N70°38'24"W	95.39
C101	103.85	1640.00	N67°09'34"W	103.83
C102	132.06	1640.00	N63°02'19"W	132.03
C103	26.59	20.00	N81°10'40"E	24.68
C104	128.96	275.00	N29°39'11"E	127.78
C105	59.14	275.00	N10°03'28"E	59.03
C106	30.65	20.00	N40°17'37"W	27.88
C107	75.14	2030.00	S83°25'26"E	75.14
C108	84.63	2030.00	S81°10'09"E	84.62
C109	86.71	2030.00	S78°45'04"E	86.70
C110	86.71	2030.00	S76°18'14"E	86.70
C111	84.39	2030.00	S73°53'21"E	84.39
C112	84.39	2030.00	S71°30'26"E	84.39
C113	86.71	2030.00	S69°05'34"E	86.70
C114	86.71	2030.00	S66°38'43"E	86.70
C115	83.88	2030.00	S64°14'17"E	83.88
C116	97.80	2030.00	S61°40'26"E	97.79
C117	81.43	2030.00	S59°08'41"E	81.42
C118	35.29	20.00	S71°27'44"W	30.88
C119	172.73	2375.00	N23°00'12"E	172.69
C120	149.57	1980.00	S59°35'27"E	149.53
C121	83.44	1980.00	S62°57'43"E	83.43
C122	86.37	1980.00	S65°26'52"E	86.36
C123	86.37	1980.00	S68°00'18"E	86.36
C124	86.37	1980.00	S70°33'44"E	86.36
C125	86.37	1980.00	S73°07'09"E	86.36
C126	93.65	1980.00	S75°45'10"E	93.64
C127	102.10	1980.00	S78°35'06"E	102.09
C128	150.25	1980.00	N82°14'10"W	150.21
C129	32.01	20.00	S49°44'37"W	28.70
C130	53.31	2475.00	N3°16'48"E	53.31
C131	105.25	2475.00	N1°26'41"E	105.24
C132	13.31	2475.00	N0°04'21"E	13.31
C133	28.20	20.00	N41°54'14"W	26.67
C134	148.82	1650.00	S81°08'43"E	148.57
C135	95.97	1650.00	S76°53'55"E	95.95
C136	83.99	1650.00	S73°46'27"E	83.98
C137	84.04	1650.00	S70°51'25"E	84.03
C138	83.99	1650.00	S67°58'23"E	83.98
C139	83.99	1650.00	S65°01'24"E	83.98
C140	112.33	1650.00	S61°36'54"E	112.31
C141	75.10	1650.00	S58°21'38"E	75.10
C142	36.93	20.00	S67°11'02"W	33.67
C143	101.40	2375.00	N12°38'52"E	101.39
C144	97.08	2375.00	N15°02'31"E	97.07
C145	103.70	2375.00	N17°27'50"E	103.70
C146	26.58	20.00	S19°21'22"E	24.67



WILLIAMS & ASSOCIATES, INC.
SINCE 1900
MADISON, MS 39110
601.665.1090